



AUTOMATED DOCUMENT distribution management

Optimized output productivity for greater efficiency

PlanetPress Watch allows you to automate the processing, distribution and printing of your transactional and promotional content documents. Be more competitive by streamlining your document distribution workflow. Reduce costs and increase efficiency by delivering your documents to their intended recipients using print, email or fax.

PlanetPress Watch is your gateway to automated local and remote printing, integrated PDF, TIFF and JPG generation for archiving, emailing and faxing via other PlanetPress Suite modules – all with no human intervention.

Benefits

- Gain operational efficiency
- Reduce costs associated with document distribution
- Capture and process data from almost any source
- Simultaneously print, email, fax and archive documents
- Automate your document distribution workflow
- Route through user-defined business rules
- Maximize output capacity
- Eliminate errors due to manual interventions

PLANETPRESS® WATCH 5

Business Applications

By automating the production and distribution of your transactional and variable content documents, your company can work for your customers while PlanetPress Watch works for you.

Consolidate print operations

Larger businesses with different transactional and variable content document needs can use PlanetPress Watch to consolidate and standardize their operations. PlanetPress Watch can monitor and automate processes over networks of all sizes and across different geographical locations.

Give your customers what they want

In competitive environments, businesses of all sizes are increasingly looking to communicate with their customers according to their needs, but are often restricted by operational limitations. From a single production stream, you can output and distribute transactional and variable content documents, using your customers' preferred delivery method. (mail, email, fax).

Automated Output Optimized Productivity



1. Import data

From one central location, PlanetPress Watch can capture data streams from almost any source: shared folders, LPD, Windows print queues, serial ports, emails, FTP, ODBC compliant databases, RAW Socket printing and more.

2. From data to documents.

PlanetPress Watch looks at the data and routes it to the appropriate device to output the right document. You can also process the data to split it into several files, search and replace items, query ODBC-compliant databases for additional information, apply business rules or redirect conditionally.

3. Distribute your documents

Print at optimum speed on local/remote PostScript printers; send documents to companion products to create electronic versions, email, fax and archive them. Automatically post a digital version of your documents on the Web or on your FTP server.



Features Overview

Visual representation of workflow

Easily create automated workflows with step-by-step preview of the workflow. PlanetPress Watch also allows you to route data streams. Manage the distribution of your documents and data, all with no coding!

Bidirectional communications

To eliminate downtime, use SNMP conditions to reroute the data if the printer is off-line, out of paper, etc. PlanetPress Watch also allows you to optimize output productivity by easily implementing distributed printing workflows. Perform queue balancing, round robin or job splitting for greater speed and efficiency.

Windows service

PlanetPress Watch and its companion products run as Windows services for enhanced security and peace of mind.

Manage document distribution

All documents created with PlanetPress can be sent to PlanetPress Watch, where they can be triggered automatically to follow a specific business workflow according to your specifications and needs.

Optional PDF Digital signing capability*

To validate the origin and integrity of your documents, PlanetPress Watch 5 is offered with an optional PDF Digital Signature module. If your business has an international presence and you need to comply with document exchange regulations, we have the ideal solution for you. With this module, you will have the ability to digitally sign all generated PDFs, enabling the recipient to be certain of the document's origin and integrity.

Numerous data sources

Data can be captured from the host via LPD, Windows print queues, shared folders, email messages (Outlook and POP3), ODBC-compliant databases, Telnet, FTP and RAW Socket printing.

Output options

Data or digital documents can be sent to LAN/WAN/Desktop printers, folders, FTP sites, email or fax recipients, TCP/IP addresses and more.

Cluster printing

Automatically distribute PlanetPress documents to clusters of printers. Perform queue balancing, round robin or job splitting for greater speed and efficiency.

Conditional routing and output

Set business rules based on the contents, name or size of the data file to route the documents to printers, email and/or fax recipients, archive or shared folders.

Job splitter

Set rules to split single jobs into several data streams based on values or characters found in the data.

Reprints

Backup all print jobs for a user-defined period, allowing for reprints.

* Requires PlanetPress Watch and the activation of the PDF Digital Signature plug-in.

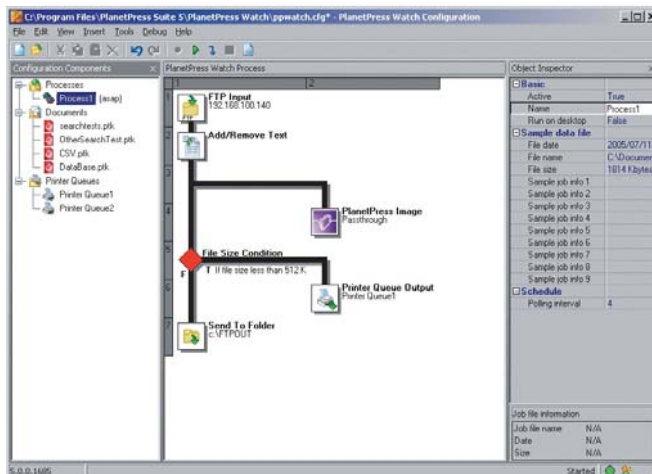


System Requirements

- Intel® Pentium® 4 or better, or equivalent, Microsoft® Windows® 2000 with SP2, Windows XP or Windows Server 2003. 512 MB of RAM. 500 MB of available hard-disk space. 1024x768 color monitor with 16-bit color or greater graphics card.
- Adobe® Acrobat® or Acrobat Reader® 5.0 or higher. (Adobe® Reader® included on CD).

Printer Requirements

- PostScript® language Level 2 or 3 compatible printer.
- 48 MB of RAM.
- Hard-disk or flash memory recommended.



Extended scripting capabilities

Use any ActiveScript language (VBScript, JScript, PerlScript, etc.) installed on your system to further process your data.

Extended logging capabilities

Each job is logged. PlanetPress Watch interfaces with the Windows Event logs to provide valuable information helping you with the ongoing development of your operation.



For more information on our line of products, visit www.objectiflune.com



- OBJECTIF LUNE INC. >> 2030 Pie IX, Suite 500, Montreal, QC, Canada H1V 2C8 / Tel.: (514) 875-5863 / Fax: (514) 342-5294 / Toronto Tel.: (905) 671-0774
- OBJECTIF LUNE USA >> 300 Broadacres Drive, 4th floor, Bloomfield, NJ 07003, USA / Tel.: (973) 780-0100 / Fax: (973) 338-8885
- OBJECTIF LUNE UK LTD >> The Hobble, Hayfield Business Park, Aspley Guise, Milton Keynes MK17 8HS, United Kingdom / Tel.: +44 (0) 1908 585461 / Fax: +44 (0) 1908 288219
- OBJECTIF LUNE GMBH >> Dr.-Albert-Schweitzer-Str. 15, D-56626 Andernach, Germany / Tel.: +49 (0) 263 295-8701 / Fax: +49 (0) 263 295-8702
- OBJECTIF LUNE K.K. >> Nissho Bldg. 7/F, 1-1-11, Nihonbashi-Ningyocho, Chuo-ku, Tokyo 103-0013 Japan / Tel.: +81 3-5847-2450 / Fax: +81 3-3664-2475
- OBJECTIF LUNE ASIA PTY >> Level 6, Suite 602, Office Tower Westfield, 159-175 Church Street, Parramatta, NSW 2150, Australia / Tel: + 61 2 9689 2122 / Fax: + 61 2 9689 2833
- DOCSOLUTIONS B.V. >> Bovenkerkerweg 41, unit 3, NL 1185 XA Amstelveen, The Netherlands / Tel.: +31 (0) 20 672 77 55 / Fax: +31 (0) 20 672 77 54
- VISUAL SYSTEMS DE COLOMBIA >> Cra. 43DD No. 8 - 42, Medellin, Colombia / Tel.: +57 4 312 13 70 / Fax: +57 4 268 92 97
- O.L. FRANCE SASU >> Tour Ariane, 5 place de la Pyramide, La Défense 9, 92088 Paris La Défense Cedex, France / Tel.: +33 (0) 1 55 68 10 21 / Fax: +33 (0) 1 55 68 11 90